

# Information on income support payments for people already getting a payment



**centrelink**

## You don't need to do anything

If you already get a Centrelink payment, you don't need to contact us to get additional payments. This includes the two lump sum \$750 Economic Support Payments to support households and the \$550 additional Coronavirus Supplement. This will happen as part of your usual payment. You can't nominate a particular day to get your payment.

### Economic Support Payments

#### FIRST LUMP SUM PAYMENT

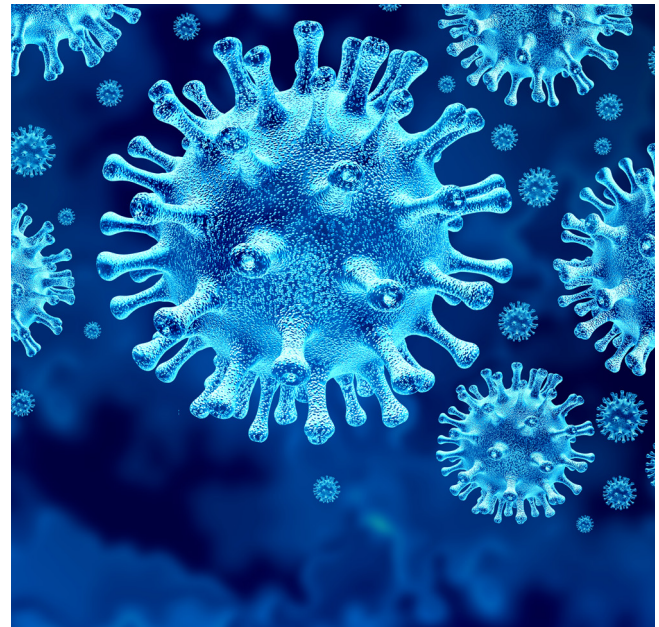
We'll pay you \$750 from 31 March 2020 if you're getting an eligible payment on any day between 12 March to 13 April 2020.

To be eligible for the first payment, you must be residing in Australia and getting one of the following payments, or hold one of the following concession cards, at any time from 12 March 2020 to 13 April 2020:

- Age Pension
- Disability Support Pension
- Carer Payment
- Parenting Payment
- Wife Pension
- Widow B Pension
- ABSTUDY (Living Allowance)
- Austudy
- Bereavement Allowance
- Newstart Allowance
- JobSeeker Payment
- Youth Allowance
- Partner Allowance
- Sickness Allowance
- Special Benefit
- Widow Allowance
- Family Tax Benefit Part A
- Family Tax Benefit Part B
- Double Orphan Pension
- Carer Allowance

- Pensioner Concession Card (PCC) holders
- Commonwealth Seniors Health Card holders
- Veteran Service Pension
- Veteran Income Support Supplement
- Veteran Compensation payments, including lump sum payments
- War Widow(er) Pension
- Veteran Payment
- DVA PCC holders
- DVA Education Scheme recipients
- Disability Pensioners at the temporary special rate
- DVA Income support pensioners at \$0 rate
- Veteran Gold Card holders
- Farm Household Allowance

If you're a Commonwealth Seniors Health Care Card holder, you'll need to make sure we have your bank account details. You can update your bank account details through myGov using your Centrelink online account.



**Australian Government**  
**Services Australia**

[servicesaustralia.gov.au](https://servicesaustralia.gov.au)

## SECOND LUMP SUM PAYMENT

We'll pay the second \$750 Economic Support Payment from 13 July 2020.

If you're not eligible for the Coronavirus Supplement, you may get a second \$750 Economic Support Payment. To be eligible for the second payment, you must be residing in Australia and on 10 July 2020 you're getting one of the payments or holding one of the concession cards that were eligible for the first payment.

Eligibility for the second payment is the same as the first. However, if you're getting an income support payment and the Coronavirus Supplement, you won't be eligible for the second Economic Support Payment (see Coronavirus Supplement eligible income support payments below).

## Coronavirus Supplement

From 27 April 2020, you'll be paid a temporary fortnightly \$550 Coronavirus Supplement if you're already getting an eligible payment.

You'll automatically get the \$550 supplement each fortnight on top of your normal payment rate if you're getting one of these payments:

- JobSeeker Payment
- Youth Allowance
- Parenting Payment
- Farm Household Allowance
- Special Benefit
- AUSTUDY
- ABSTUDY (living allowance)